

NASSER AZAM

X

*Mareca*

THE RENAISSANCE COLLECTION 2023

MANHATTAN, NEW YORK

## THE ARTIST

Nasser Azam (b. 1963, Pakistan) is a London-based British-Asian contemporary artist. Azam's reputation was established in the early 1980s, with exhibitions at galleries in Birmingham and the West Midlands, including the Barber Institute of Fine Arts. In 2007, after an extended period living and travelling in Japan, Europe and America, Azam became Artist-in-Residence at County Hall Gallery, London, mounting a series of major exhibitions of early and recent work, including the critically acclaimed *Anatomica* in April 2008. It was at this time he began working with sculpture, and in February 2008 a monumental bronze, *The Dance*, was unveiled on London's South Bank, opposite the Houses of Parliament on the River Thames. A series of projects that reflect Azam's interest in painting as a performance in extreme working conditions followed, from *Zero Gravity* (Star City, Moscow, 2008), to the freezing ice deserts of Antarctica (2010), where he completed 13 largescale oil paintings, displayed in the Tokyo Metro, Japan and London Underground in 2011. In 2012 *Athena* was unveiled at London City Airport; at 12 metres it is the tallest public bronze sculpture in the UK. This was followed by *Evolutionary Loop 517*, a six-metre bronze for the Sir Duncan Rice Library at Aberdeen University in 2013. In the same year, Azam completed a commission of several artworks for the highly acclaimed restaurant and hospitality group, Altamarea Group, based in New York City. Ten years later, Azam was commissioned to provide a new curation of art for their flagship and world renowned restaurant, Marea in New York. Azam's three-metre-high officially commissioned portrait painting of Malala Yousafzai, the Pakistani education activist, Nobel prize-winner and, was unveiled in 2015 at the Barber Institute of Fine Arts, Birmingham. In 2019, London's Saatchi Gallery hosted Azam's largest and most comprehensive solo exhibition to date, displaying paintings inspired by his journey to Saiful Malook, near the mountains of Kashmir. Azam's work is included in numerous private and public collections, including the Ben Uri Gallery and Museum, Aberdeen University, Birmingham University, Zabłudowicz Collection, The Sovereign Art Foundation and The Altamarea Group. He has also carried out commissioned work for the National Botanical Gardens, in Dublin.

For all inquiries, please contact:

[kbolyai@altamareagroup.com](mailto:kbolyai@altamareagroup.com) (New York City)

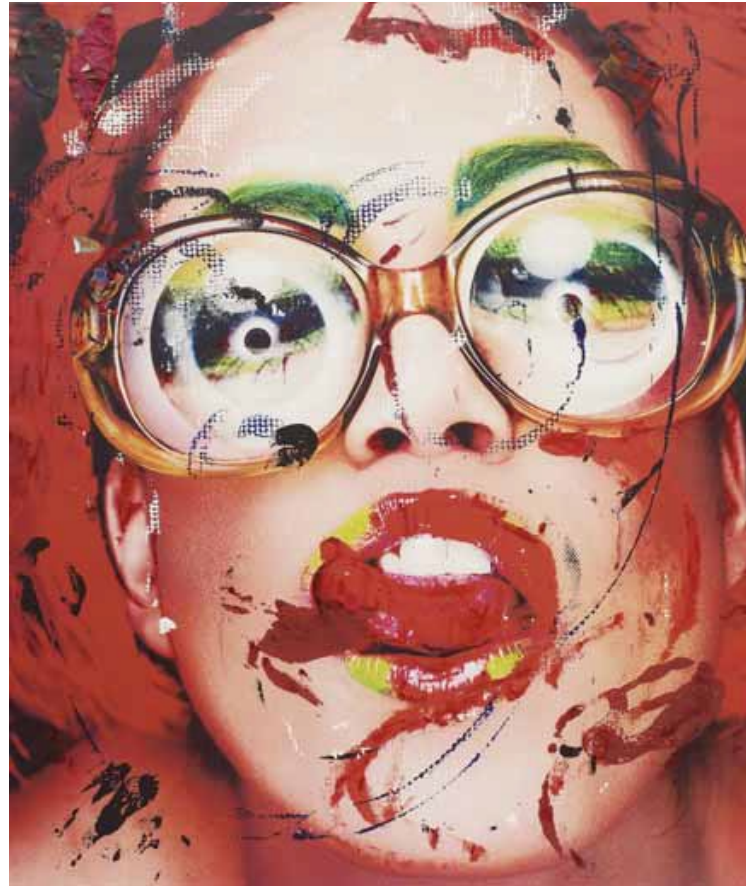
[ana@azam.com](mailto:ana@azam.com) (London)



*Poppy* | 2010 | 185 x 285 cm | oil on canvas

Displayed at the Victoria & Albert Museum in London to commemorate the 40<sup>th</sup> anniversary of  
The Sun Newspaper (News International Group's) iconic Page 3 models

*Available as Collector's Edition Unique hand embellished print with acrylic, oil, collage and mixed media, on soft-gloss sheen photographic paper (100 x 140 cm, framed)*



*After Carolyn: Green* | 2011 | 195 x 165 cm | oil on canvas

After Carolyn series consists of five original works with different colour accents.  
Inspired by the period of the artist's life spent in Tokyo between 1992-2002.

*Available as Collector's Edition Unique hand embellished print with acrylic, oil, collage and mixed media, on soft-gloss sheen photographic paper (120 x 105 cm, framed)*



*Antarctica Iterations I.XI* | 2010 | 85 x 120 cm | oil on canvas

Painted upon return from an expedition to Antarctica. Palette is reduced to primary colours, laid over images of the continent's ice desert. Stark contrast between the two represents artistic intervention in the blank landscape resembling a canvas.

*Available as Collector's Edition Unique hand embellished print with acrylic, oil, collage and mixed media, on soft-gloss sheen photographic paper (105 x 140 cm, framed)*





*Antarctica Iterations VIX* | 2010 | 85 x 120 cm | oil on canvas

The series of works influenced by the ice landscapes marks the artist's transformative journey – from the busy life in global capitals to the contemplative creative process taking place in his studio.

*Available as Collector's Edition Unique hand embellished print with acrylic, oil, collage and mixed media, on soft-gloss sheen photographic paper (105 x 140 cm, framed)*



*Ice Desert IX* | 2010 | 100 x 100 cm (framed: 105 x 105 cm) | oil on canvas

The piece was painted in Antarctica, as the artist was faced with the most treacherous weather conditions on earth. Harshness of the climate is symbolised by abstract shapes which resemble slashes on the brightly painted background.



*Ice Desert II* | 2010 | 100 x 100 cm (framed: 105 x 105 cm) | oil on canvas

The red painting created in Antarctica represents a red flag, symbol of an emergency in a fast changing climate of the ice continent. It is also a mark of the artist's confrontation with the elements, which saw him battle the winds, sub-zero temperature and blizzards to complete the artwork.





*Ice Desert III* | 2010 | 100 x 100 cm (framed: 105 x 105 cm) | oil on canvas

The artist's recognisable blue background refers to the skylines of Antarctica. The ice continent is almost void of life, so the sky is often the only source of colour. Linear brush strokes symbolise the artist's creative intervention in a motionless environment.



*Aquinnah I* | 2013 | 81 x 81 cm | flatbed inkjet print on mirror

Azam developed a unique printing technique with abstract shapes floating on the flat mirrored surface. When confronted with pieces, spectators are seeing themselves as an integral part of the artwork.



*Aquinnah IV* | 2013 | 81 x 81 cm | flatbed inkjet print on mirror

In his most personal and reflective series, Azam plays with two-dimensionality of painting. Although flat, these mirror pieces create a sense of space behind the intermittent layers of paint.



*Aquinnah V* | 2013 | 81 x 81 cm | flatbed inkjet print on mirror

Created after the global success of the artist's monumental sculptures, the AQUINNAH series represents the beginning of Azam's mature phase, which combines the elements of the three key traditional techniques - painting, sculpture and printmaking.

Published by Airside Studios

© Nasser Azam 2023

All artworks by Nasser Azam

© Licensed by Azam Studio

Studio Manager: Ana Milenkovic

All right reserved. No part of this publication may be Reprinted or reproduced in any form or by any electronic, mechanical, or other means, now known or hereafter invented, including photocopying and recording, or in any information retrieval system, without prior written permission from the copyright holders.